

**Amanda Ansell**



**Amanda Ansell**  
**Rearranging Curves**

## Contents

Introduction	5
Artworks	6
Exhibitions	20

## Introduction

For the artist, communication with nature remains the most essential condition. The artist is human; him[her]self nature; part of nature within natural space.

Paul Klee

A similar kind of concentrated connectivity characterises the paintings of Suffolk born UK artist, Amanda Ansell. Since graduating from the Slade School of Fine Art London in 2000, Ansell has been making paintings which reflect upon intimate spaces and the natural environment. Through her work, she considers how we might physically, visually and emotionally experience and create a sense of place.

Two years ago Ansell moved into a new studio which overlooks the River Stour on the Suffolk Essex border. It's a space in an old watermill building, with small windows that look out onto a watery landscape. There is the perpetual sound of moving water and outside the building, an abundance of green landscape to behold. It is from this point that Ansell's colour palette and methodology for making her art started to take on a fresh significance.

In her new work, Ansell uses curved line arrangements which are based upon quick drawings of forms observed in the landscape. These are recorded in a notebook or on loose sheets of paper and are then re-organised to fit a desired composition. Their final placement is determined through a rehearsal which has sensitivity for the existing surface detail; so some areas of the painting are deliberately left to reveal something, whilst other areas, are over painted and concealed.

Through her process, rhythmical curved lines metamorphose to become organised gestures poised in relationship to one another. The synthesis of repetitive marks and abstract gestural overlays of natural tones, creates a series of intermingling forms on the point of convergence. The viewer is witnessing the threshold of a merger and left meditating on the moment before a union occurs.

In this new series of works, Ansell offers us an art which inherently relates back to an interrelationship between artist and environment. In a world of simulated realities and rapid technological change and sway, Ansell encourages us to go outside and make our own connections, which also explore the edges of ourselves.

## Artworks



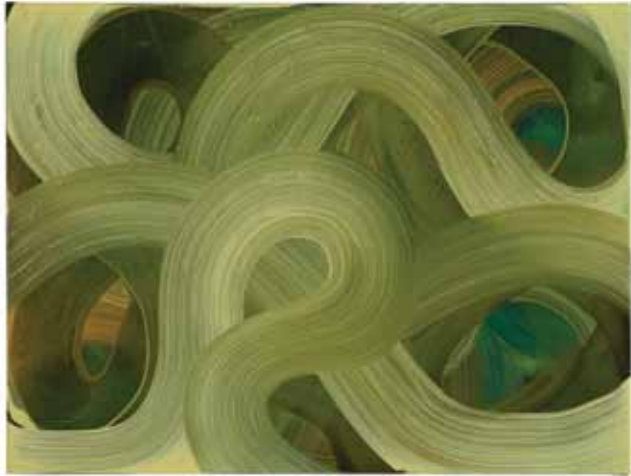
**Soothed Grooves, 2017**  
Oil on canvas  
92.5 x 81.5cm



Clouds, 2017  
Oil on canvas  
35 x 45cm



Pistachio Branches, 2016  
Oil on canvas  
35 x 30cm



Liquid Gold, 2016  
Oil on canvas  
45 x 60cm



Chorus, 2016  
Oil on canvas  
61 x 51cm



Who's Exploring Who? 2016  
Oil on canvas  
45 x 35cm



Weeping Willow, 2015  
Oil on canvas  
45 x 60cm



**States of Green, 2015**  
Oil on canvas  
130 x 110cm



**Untitled Tangle, 2015**  
Oil on canvas  
35 x 45cm





Formation 1, 2017  
Pastel on paper  
32 x 23.5cm



Formation 2, 2017  
Pastel on paper  
32 x 23.5cm



Formation 4, 2017  
Pastel on paper  
32 x 23.5cm

## CV

Born 1976, Sudbury, Suffolk. UK

## Education

1998 – 2000

The Slade School of Fine Art, London.  
MFA Painting

1995 – 1998

Norwich School of Art and Design, Norfolk.  
BA (Hons) Fine Art Painting

1994 – 1995

Ipswich Art School, Suffolk.  
Foundation in Art

## Exhibitions

### 2017

Drawing into Landscape, Crypt Gallery,  
St Marylebone, London

Rearranging Curves (solo), Arts Library Gallery, London

Contemporary Masters from the East of England,  
The Cut, Halesworth, Suffolk

Contemporary Masters from Britain (China touring exhibition): Yantai  
Art Museum, People's Republic of China; Jiangsu Arts and Crafts  
Museum, Artall Arts Center, Nanjing, China; Jiangsu Art Museum,  
Nanjing, China; Tianjin Academy of Fine Art, Tianjin, China

### 2016

30 x 30 x 34, Crypt Gallery, St. Marylebone, London

PING, The Minorities Galleries, Essex

Ways of Seeing, Boathouse Gallery, Suffolk

### 2015

Present Tense, Swindon Museum and Art Gallery, Wiltshire

The London Group Open, London

### 2014

Contemporary British Painting, Huddersfield Art Gallery,  
West Yorkshire

@PaintBritain, Ipswich Art School Gallery, Suffolk

Easterlies, Abbey Walk Gallery, Lincolnshire

Places and Landscapes, Waterfront Gallery, Ipswich, Suffolk

Contemporary British Painting, Crypt Gallery, St.Marylebone, London

### 2012

The Royal Academy of Arts Summer Exhibition, London (invited artist)

### 2011

Waterline, Waterfront Gallery, Ipswich, Suffolk

### 2009

The Royal Academy of Arts Summer Exhibition, London  
New Blood Art, Crane Mews, Middlesex

### 2008

Artsway Open 08, Artsway, Sway, Hampshire

Recent Paintings (solo), Halesworth Gallery, Suffolk

### 2007

Celeste Prize, London

Eastern Open 07, Kings Lynn Art Centre, Norfolk

### 2006

Artist Space (solo), Firstsite, Essex

Kettle's Yard Open, Kettle's Yard, Cambridge

### 2003

40 x 40, Vertigo, London

### 2002

The Royal Academy of Arts Summer Exhibition, London  
Family Favourites, Vertigo, London

### 2001

The Royal Academy of Arts Summer Exhibition, London  
Art 2001, (Vertigo) Business Design Centre, London

### 2000

Starstruck, Vertigo, London

Launch, Raw Gallery, London

Art 2000, (Vertigo) Business Design Centre, London

### 1999

Grrr! The Paper Bag Factory, London

## Collections

Jiangsu Arts and Crafts Museum, Artall Arts Center,  
Nanjing, China

Swindon Museum and Art Gallery, UK

Gissings Collection, London, UK

East Contemporary Art, University of Suffolk, UK

Priseman Seabrook Collection, UK

Private Collections

### **Published on the occasion of the exhibition**

Amanda Ansell

Rearranging Curves

30th January - 11th February 2017

Arts Library Gallery

35 St Martin's Street

London. WC2H 7HP

All works © Amanda Ansell

[amandaansell.co.uk](http://amandaansell.co.uk)

Photography by Douglas Atfield